

# Labour Market Information (LMI)



# LMI

Labour market information is a set of data that helps describe how jobs are changing, now and into the future. It is used to give an overall picture of the past, present and future of work. Labour market information includes information about: occupations, their locations, wages, supply and demand, and demographics. Understanding labour market information is important in a variety of contexts, and particularly for work and education. It allows you to see which sectors, in your local area, are short staffed, for example.



What do people do  
in this job/  
industry?



How many people  
work  
in this  
job/industry?



What qualifications do  
I need for this job/  
industry



How much do people  
get paid to do this  
job?



What skills and  
qualities  
do I need for this  
job?

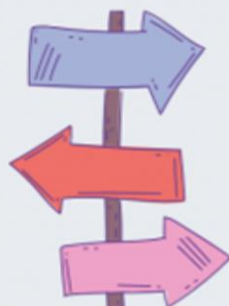
## LABOUR MARKET INFORMATION



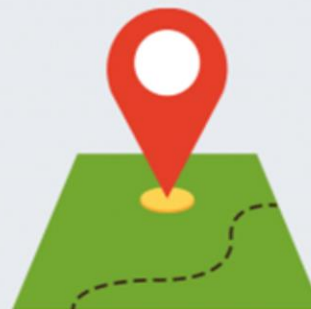
What are the typical  
working hours for  
this job/industry?



What percentage  
of men and  
women work in  
this job/industry?



Where can this job/  
industry take  
me in the future?



Where are these jobs  
located around the  
country?



How many of these  
jobs will there be in  
the future?



## Fastest Growing Occupations

**POSITIVE %  
INCREASE  
IN JOBS  
2018-21**

Care Workers & Home Carers	18%
Book Keepers & Payroll Managers	19%
Security Guards & Related Occupations	16%
Chartered & Certified Accountants	30%
Electricians & Electrical Fitters	18%
Cleaners & Domestics	5%
Bar Staff	11%
Plumbers, Heating & Ventilation Engineers	20%
Bus & Coach Drivers	22%
Sales and Business Development Managers	6%

**Medway Labour Market (LMI) information:**

## Highest Paying Occupations

2020 MEDIAN HOURLY WAGES

1. Advertising & Public Relations Directors	<b>£40.15</b>
2. Aircraft Pilots & Flight Engineers	<b>£39.51</b>
3. Elected Officers & Representatives	<b>£38.16</b>
4. Chief Executives & Senior Officials	<b>£37.64</b>
5. Marketing & Sales Directors	<b>£37.38</b>
6. Legal Professionals	<b>£35.79</b>
7. Train & Tram Drivers	<b>£33.67</b>
8. Medical Practitioners	<b>£32.44</b>
9. IT & Telecommunications Directors	<b>£31.64</b>
10. Senior Professionals of Education	<b>£30.73</b>

# Labour Market Information

\*LMI obtained from the Office for National Statistics and Gov.uk. Poster last updated August 2020

\*\* Data used in this poster covers the period April - June 2020 and includes furloughed workers

National  
Careers  
Service

## South East LEP

East Sussex, Essex, Kent, Medway, Southend & Thurrock



### Employment

UK - 76.4%  
LEP - 77.9%



### Unemployment

UK - 3.9%  
LEP - 3.5%

16-64 year old population = 2,559,100  
Total population = 4,233,800

### Full-Time Salary



UK Average - £30,414  
LEP Average - £29,697

### Self-Employment



353,900 people in the region  
are self-employed

### Apprenticeships

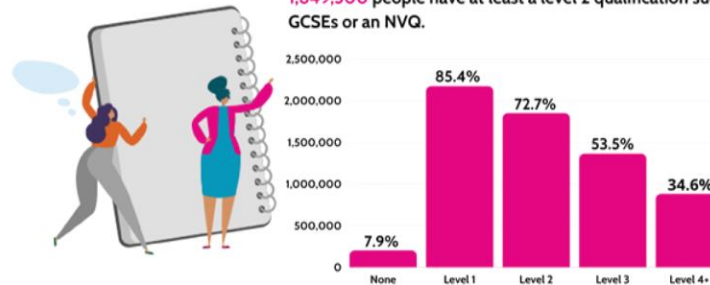
There are approximately 1,409 live vacancies within a 40 mile radius of Grays, including...

- Dental Nurse
- Business and Administration
- Import/Export Clerk
- Chef
- Teaching Assistant
- Hair and Beauty
- Accountant
- Website Administrator
- Digital Marketing
- Geospatial Survey Technician

Plus many more! Find local opportunities on  
[www.apprenticeships.gov.uk/](http://www.apprenticeships.gov.uk/)

### Qualification levels

1,849,500 people have at least a level 2 qualification such as GCSEs or an NVQ.



### Where do people work right now?

#### Most jobs

- Wholesale & Retail - 282,000 (17.7%)
- Health & Social Care - 224,000 (14.1%)
- Education - 159,000 (10%)
- Administration - 129,000 (8.1%)
- Accommodation & Food - 118,000 (7.4%)

#### Fewest jobs

- Arts & Entertainment - 41,000 (2.6%)
- Real Estate - 25,000 (1.6%)
- Water, Sewerage & Waste - 16,000 (1%)
- Electricity, Gas & Air - 3,500 (0.2%)
- Mining, Quarrying & Utilities - 600 (0.02%)

#### Growth Sectors

- Health and Social Care
- Construction
- Manufacturing
- IT, Digital & Creative
- Professional, scientific & technical

There are many other sectors that will grow in your region.



# Medway LMI:

## *Medway sector strengths:*

- Creative and digital
- Transport and logistics
- Tourism and hospitality
- Construction
- Agriculture
- Advanced manufacturing

## *Medway jobs in demand:*

- Marketing
- Electrician
- Nurse
- Chef
- Engineer
- Physiotherapist
- Carpenter
- Social worker
- Graphic designer



# Where can I find out more about LMI?

<https://www.lmiforall.org.uk/>

<https://www.cxk.org/resources/labour-market-information/>



# Your school careers websites:

- WGSP: <https://wgsp.org.uk/careers/>
- Greenacre: <https://wgsp.org.uk/careers/>
- Walderslade: <https://wgsp.org.uk/careers/>