



Curriculum Journey: Year 11 English

- Study literary and dramatic conventions of a tragedy
- Apply critical theory to contemporary prose and drama
- Apply poetic concepts to pre-1900 anthologies

CAREER: Use knowledge studied in future employment, or apprenticeship

CAREER: Apply for jobs in: journalism, marketing, publishing etc.

Study English at University

KS5 & Beyond

A LEVEL ENGLISH LITERATURE

FURTHER EDUCATION

T3&4 Assessment:

- Interleaved knowledge checkpoint
- Literature Paper 1
- Language Paper 2
- STAR test

- Explicit and implicit relationships between texts
- Power of language for different purposes
- Impact of supernatural and it's influence upon the plot
- Gender conventions and stereotypes throughout time
- **Career Focus: Relevant to topic**

T1&2 Assessment:

- Literature:
- Poetry comparison essay
 - STAR test
 - Literature Paper 1
 - Literature Paper 2

- Relationships between identity and inner conflict
- Conflict of the self
- Consequences of limited free will
- Power of the past
- **Career Focus: Poet/Author/Writer**

AQA LANGUAGE AND AQA LITERATURE REVISION

POETRY AND LANGUAGE

Year 11

T1&2 Assessment:

- Language Paper 1: Writing and Literature: Macbeth essay

- Conflict between society and the Monster
- Nature, nurture and freewill
- Relationship between the Monster and Victor
- Power and influence of nature
- **Career Focus: Scientist**

T5&6 Assessment:

- Language Paper 2 and Literature: AIC essay

T5&6 Assessment: Reading assessment and end of year checkpoint

Year 10

MACBETH

FRANKENSTEIN

AN INSPECTOR CALLS

- Manipulation of the Supernatural
- Power within a tyrannical reign
- Breaking gender stereotypes
- Conflict resulting in regret
- **Career Focus: Armed forces**

T3&4 Assessment: Language Paper 2 writing and Literature: Frankenstein essay

- Conflict and influence on family dynamic
- Power struggles between social class
- Relationships between the older and younger generation
- Pre and post War conflict
- **Career Focus: Factory Employer/Employee**

T3&4 Assessment: Knowledge quiz and transactional writing

HAMLET

A CHRISTMAS CAROL

Year 9

T5&6 Assessment:

- STAR test, reading assessment and end of year checkpoint

- Power of the mind
- Fear and its conflicting emotions
- Supernatural and human interaction
- Power of tension and suspense
- **Career Focus: Solicitor**

- Influence of the supernatural
- Shakespeare's intentions and context
- Mental health and conflict of emotions
- Power of the monarchy
- **Career focus: Mental Health Worker**

- Power of linking character to society
- Relationships between social classes
- Influence of present, past and future
- Role of supernatural in change and redemption
- **Career focus: Finance**

T1&2 Assessment: STAR test, fictional writing and reading checkpoint

T3&4 Assessment: Knowledge quiz and transactional writing

T1&2 Assessment: STAR test, fictional writing and reading checkpoint

OF MICE AND MEN

HISTORICAL EVENTS

NOUGHTS AND CROSSES

T5&6 Assessment: STAR test, reading assessment and end of year checkpoint

Year 8



- Conflict in 1930s America
- Gender discrimination
- Positive and negative relationships
- Revenge and justice
- **Career focus: Farming**

- Conflict in a modern society
- Power of the media and music
- Relationships between texts
- Power of empathy
- **Career focus: Journalism**



- Power of change
- Romantic relationships
- Conflict, violence and terrorism
- Internal vs external conflict
- **Career focus: Politician**

T3&4 Assessment STAR test, knowledge quiz and transactional writing

ROMEO AND JULIET

ROALD DAHL SHORT STORIES

Year 7

TRANSITION

- Conflict and the dystopian genre
- Relationships between friends and family
- Characters free will
- Violence and conflict in the Games
- **Career focus: Architect**

- Introduction to Shakespeare's tragedy form
- Relationship between Romeo and Juliet
- Gender roles in Elizabethan England
- Conflict and fate of characters
- **Career focus: Domestic services**



T1&2 Assessment: STAR test, fictional writing and reading checkpoint

- Introduction to GA English
- Introduce AR
- Read a range of fiction and non-fiction texts

Trip opportunities:

- Year 7: Stratford Upon Avon, Forest Laser Tag
- Year 8: Stadium Tour, Cinema/Theatre
- Year 9: The Globe Theatre, Walking Tour
- KS4: GCSE texts on stage
- *Open to all: Harry Potter Studio Tour, London, Stadium residential.*

Club opportunities (on rotation throughout the year):

- KS3 Spelling Bee
- Creative Writing
- Debate Club
- Library Lunch/Reading Club
- School Newspaper



Curriculum Journey: Year 10 English

- Study literary and dramatic conventions of a tragedy
- Apply critical theory to contemporary prose and drama
- Apply poetic concepts to pre-1900 anthologies

CAREER: Use knowledge studied in future employment, or apprenticeship

CAREER: Apply for jobs in: journalism, marketing, publishing etc.

Study English at University

KS5 & Beyond

A LEVEL ENGLISH LITERATURE

FURTHER EDUCATION

T3&4 Assessment:

- Interleaved knowledge checkpoint
- Literature Paper 1
- Language Paper 2
- STAR test

- Explicit and implicit relationships between texts
- Power of language for different purposes
- Impact of supernatural and it's influence upon the plot
- Gender conventions and stereotypes throughout time
- **Career Focus: Relevant to topic**

T1&2 Assessment:

- Literature: Poetry essay
- STAR test
- Literature Paper 1
- Literature Paper 2

Relationship between poems and poets
Alternative meanings and deceit
Consequences of power
Challenging stereotypes of the past
Career Focus: Poet/Author/Writer

AQA LANGUAGE AND AQA LITERATURE REVISION

UNSEEN POETRY AND LANGUAGE

Year 11

T5&6 Assessment:

- Literature: Frankenstein essay, STAR test, Literature Paper 1, Language Paper 2

T1&2 Assessment:

- Literature: AIC essay, STAR test
- Literature Paper 2

AN INSPECTOR CALLS (interleaved P&C)

- Conflict and influence on family dynamic
- Power struggles between social class
- Relationships between the older and younger generation
- Pre and post War conflict
- **Career Focus: Factory Employer/Employee**

MACBETH

T3&4 Assessment:

- STAR test, Language Paper 2, Macbeth essay

- Conflict between society and the Monster
- Nature, nurture and freewill
- Relationship between the Monster and Victor
- Power and influence of nature
- **Career Focus: Scientist**

T5&6 Assessment:

- Reading assessment and end of year checkpoint

Year 10

T3&4 Assessment:
Knowledge quiz and transactional writing

MUCH ADO ABOUT NOTHING

- Influence of deceit
- Shakespeare's intentions and context
- Power of religious beliefs
- Conflicting opinions and decisions
- **Career focus: Mental Health Worker**

T1&2 Assessment:

- STAR test, fictional writing and reading checkpoint

A CHRISTMAS CAROL

- Power of linking character to society
- Relationships between social classes
- Influence of present, past and future
- Role of supernatural in change and redemption
- **Career focus: Finance**

T5&6 Assessment:

- STAR test, reading assessment and end of year checkpoint

Year 9

- Power of the mind
- Fear and its conflicting emotions
- Supernatural and human interaction
- Power of tension and suspense
- **Career Focus: Solicitor**

WOMAN IN BLACK

Year 8

T5&6 Assessment:
STAR test, reading assessment and end of year checkpoint

T1&2 Assessment:
STAR test, fictional writing and reading checkpoint

OF MICE AND MEN

- Conflict in 1930s America
- Gender discrimination
- Positive and negative relationships
- Revenge and justice
- **Career focus: Farming**

T3&4 Assessment:
Knowledge quiz and transactional writing

HISTORICAL EVENTS

- Conflict in a modern society
- Power of the media and music
- Relationships between texts
- Power of empathy
- **Career focus: Journalism**



NOUGHTS AND CROSSES

- Power of change
- Romantic relationships
- Conflict, violence and terrorism
- Internal vs external conflict
- **Career focus: Politician**

T3&4 Assessment
STAR test, knowledge quiz and transactional writing

ROMEO AND JULIET

- Introduction to Shakespeare's tragedy form
- Relationship between Romeo and Juliet
- Gender roles in Elizabethan England
- Conflict and fate of characters
- **Career focus: Domestic services**

ROALD DAHL SHORT STORIES

T1&2 Assessment:
STAR test, fictional writing and reading checkpoint

Year 7

TRANSITION

- Introduction to GA English
- Introduce AR
- Read a range of fiction and non-fiction texts

Trip opportunities:

- Year 7: Stratford Upon Avon, Forest Laser Tag
- Year 8: Stadium Tour, Cinema/Theatre
- Year 9: The Globe Theatre, Walking Tour
- KS4: GCSE texts on stage
- *Open to all: Harry Potter Studio Tour, London, Stadium residential.*

Club opportunities (on rotation throughout the year):

- KS3 Spelling Bee
- Creative Writing
- Debate Club
- Library Lunch/Reading Club
- School Newspaper



Curriculum Journey: Year 9 English

- Study literary and dramatic conventions of a tragedy
- Apply critical theory to contemporary prose and drama
- Apply poetic concepts to pre-1900 anthologies

CAREER: Use knowledge studied in future employment, or apprenticeship

CAREER: Apply for jobs in: journalism, marketing, publishing etc. Study English at University

KS5 & Beyond

A LEVEL ENGLISH LITERATURE

FURTHER EDUCATION

T3&4 Assessment:

Interleaved knowledge checkpoint, Literature Paper 1, Language Paper 2, STAR test

- Explicit and implicit relationships between texts
- Power of language for different purposes
- Impact of supernatural and it's influence upon the plot
- Gender conventions and stereotypes throughout time
- **Career Focus:** Relevant to topic

T1&2 Assessment:

Literature: Unseen essay, STAR test ,Language Paper 1, Literature Paper 2

- Relationship between poems and poets
- Alternative meanings and deceit
- Consequences of power
- Challenging stereotypes of the past
- **Career Focus:** Poet/Author/Writer

AQA LANGUAGE AND AQA LITERATURE REVISION

UNSEEN POETRY AND LANGUAGE

Year 11

T1&2 Assessment:

Literature: AIC essay, STAR test Literature Paper 2

- Manipulation of the Supernatural
- Power within a tyrannical reign
- Breaking gender stereotypes
- Conflict resulting in regret
- **Career Focus:** Armed forces

T5&6 Assessment:

Literature: Frankenstein essay, STAR test, Literature Paper 1 , Language Paper 2

AN INSPECTOR CALLS (interleaved P&C)

MACBETH

FRANKENSTEIN

T5&6 Assessment:

Reading assessment and end of year checkpoint

- Conflict and influence on family dynamic
- Power struggles between social class
- Relationships between the older and younger generation
- Pre and post War conflict
- **Career Focus:** Factory Employer/Employee

T3&4 Assessment:

STAR test, Language Paper 2, Macbeth essay

- Conflict between society and the Monster
- Nature, nurture and freewill
- Relationship between the Monster and Victor
- Power and influence of nature
- **Career Focus:** Scientist

Year 10

T3&4 Assessment:
Knowledge quiz and transactional writing

T1&2 Assessment:

STAR test, fictional writing and reading checkpoint

T5&6 Assessment:

STAR test, reading assessment and end of year checkpoint

WOMAN IN BLACK

MUCH ADO ABOUT NOTHING

A CHRISTMAS CAROL

Year 9

- Power of the mind
- Fear and its conflicting emotions
- Supernatural and human interaction
- Power of tension and suspense
- **Career Focus:** Solicitor

- Influence of deceit within a relationship
- Shakespeare's intentions and context
- Power of religious beliefs
- Conflicting opinions and decisions
- **Career focus:** Mental Health Worker

- Power of linking character to society
- Relationships between social classes
- Influence of present, past and future
- Role of supernatural in change and redemption
- **Career focus:** Finance

Year 8

NOUGHTS AND CROSSES

HISTORICAL EVENTS

THE BOXER

T5&6 Assessment:
STAR test, reading assessment and end of year checkpoint

T1&2 Assessment:
STAR test, fictional writing and reading checkpoint

T3&4 Assessment:
Knowledge quiz and transactional writing

- Power of change
- Romantic relationships
- Conflict, violence and terrorism
- Internal vs external conflict
- **Career focus:** Politician

- Conflict in a modern society
- Power of the media and music
- Relationships between texts
- Power of empathy
- **Career focus:** Journalism

- Power of language
- Relationships with friends
- Conflicting opinions - protests and riots
- Impact of deceit
- **Career focus:** Sports professional

THE HUNGER GAMES

ROMEO AND JULIET

POETRY ANTHOLOGY

Year 7

TRANSITION

- Conflict and the dystopian genre
- Relationships between friends and family
- Characters free will
- Violence and conflict in the Games
- **Career focus:** Architect

- Introduction to Shakespeare's tragedy form
- Relationship between Romeo and Juliet
- Gender roles in Elizabethan England
- Conflict and fate of characters
- **Career focus:** Domestic services

T1&2 Assessment:
STAR test, fictional writing and reading checkpoint

- Introduction to GA English
- Introduce AR
- Read a range of fiction and non-fiction texts

Trip opportunities:

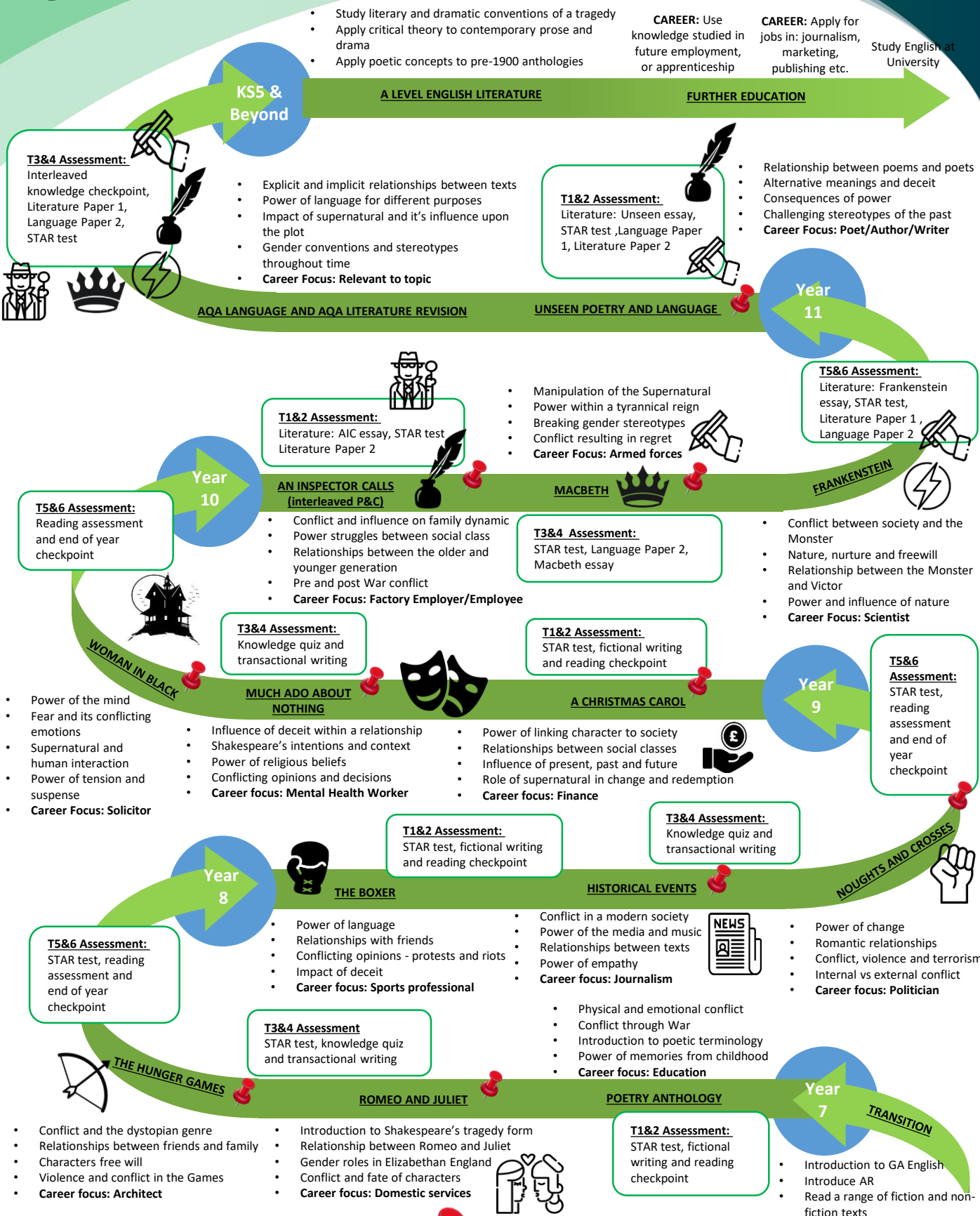
- Year 7: Stratford Upon Avon, Forest Laser Tag
- Year 8: Stadium Tour, Cinema/Theatre
- Year 9: The Globe Theatre, Walking Tour
- KS4: GCSE texts on stage
- Open to all: Harry Potter Studio Tour, London, Stadium residential.

Club opportunities (on rotation throughout the year):

- KS3 Spelling Bee
- Creative Writing
- Debate Club
- Library Lunch/Reading Club
- School Newspaper



Curriculum Journey: Year 8 English



Trip opportunities:

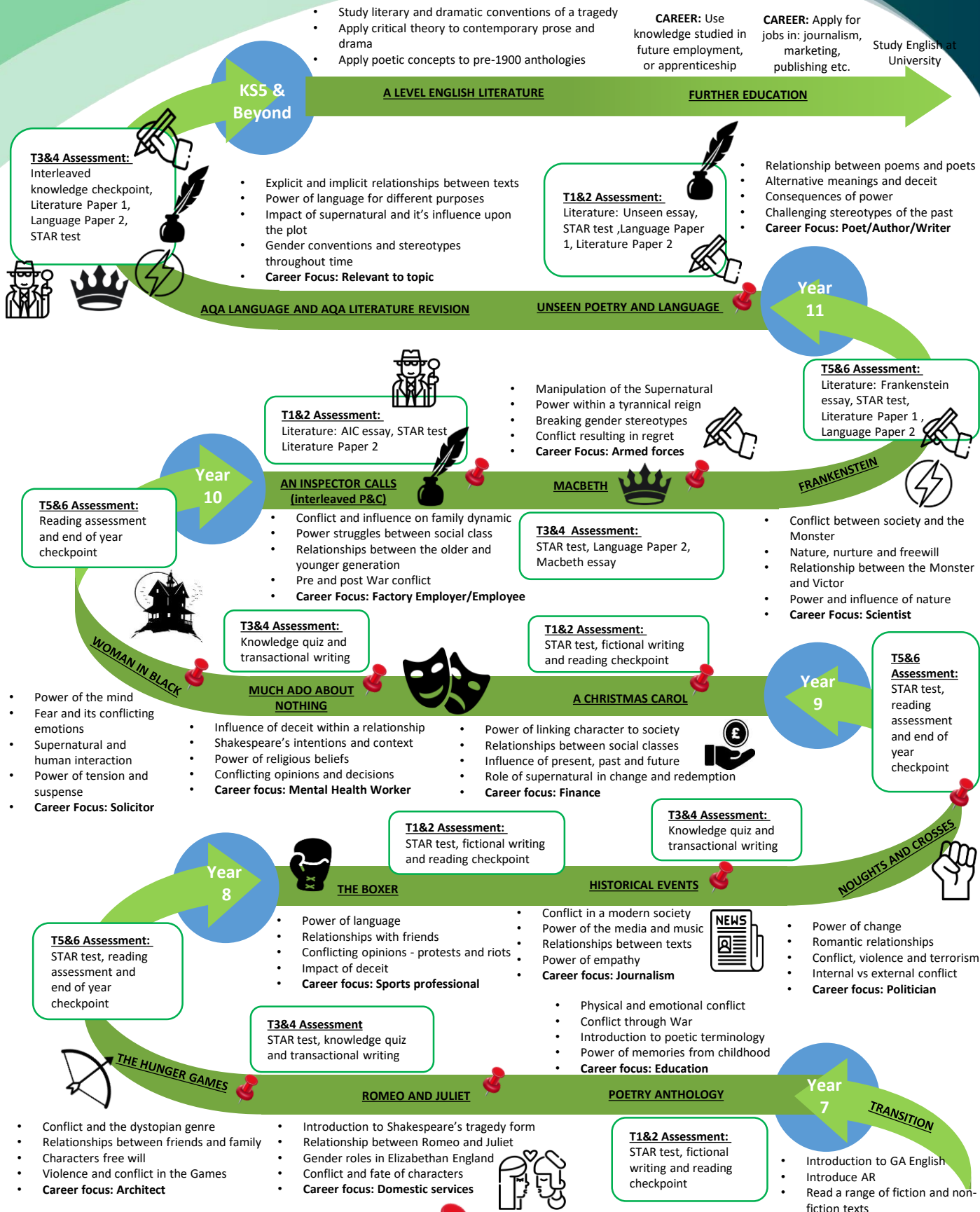
- Year 7: Stratford Upon Avon, Forest Laser Tag
- Year 8: Stadium Tour, Cinema/Theatre
- Year 9: The Globe Theatre, Walking Tour
- KS4: GCSE texts on stage
- Open to all: Harry Potter Studio Tour, London, Stadium residential.

Club opportunities (on rotation throughout the year):

- KS3 Spelling Bee
- Creative Writing
- Debate Club
- Library Lunch/Reading Club
- School Newspaper



Curriculum Journey: Year 7 English



Trip opportunities:

- Year 7: Stratford Upon Avon, Forest Laser Tag
- Year 8: Stadium Tour, Cinema/Theatre
- Year 9: The Globe Theatre, Walking Tour
- KS4: GCSE texts on stage
- Open to all: Harry Potter Studio Tour, London, Stadium residential.

Club opportunities (on rotation throughout the year):

- KS3 Spelling Bee
- Creative Writing
- Debate Club
- Library Lunch/Reading Club
- School Newspaper